

Side Span End of Saddle  
Scale 1/2" = 1'-0"

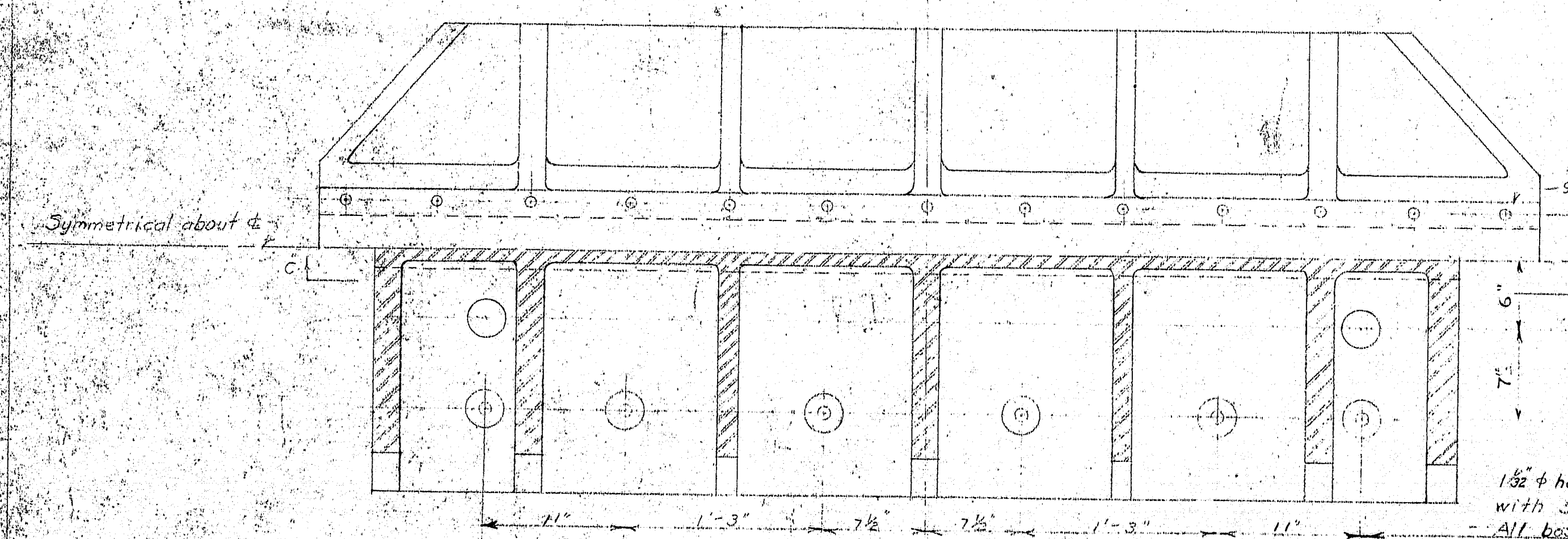
Main Span End of Saddle  
Scale 1/2" = 1'-0"

Half Elevation

Half Section C-C

Main Tower Saddle

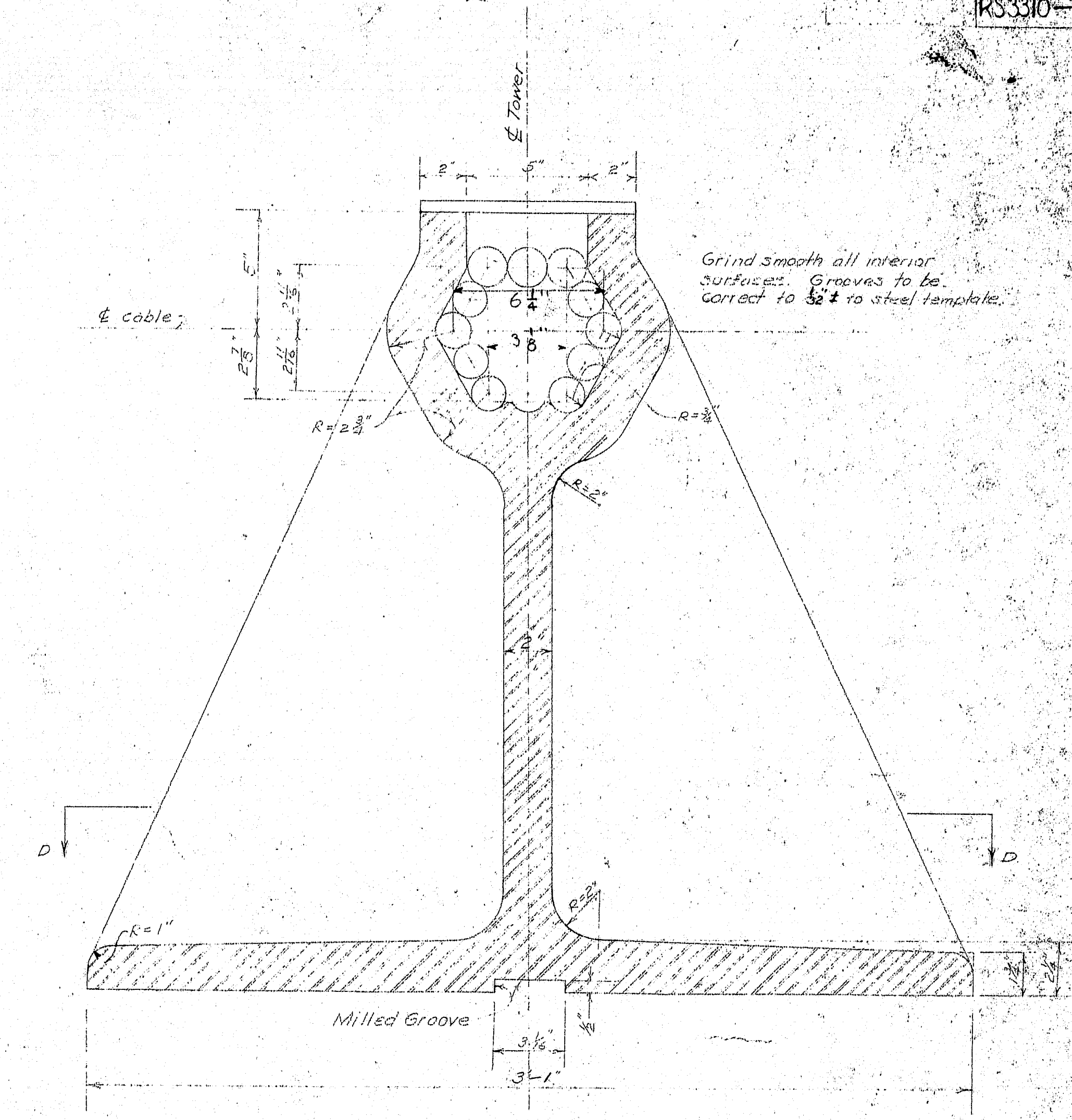
Required: Four Main Tower Saddles (Cast Steel annealed)  
complete with bolts and covers.



Half Top View

Half Section D-D

1 1/2" hole for 1" turned bolt to be drilled  
with saddle assembled to Cap Pl. of tower.  
All bolts 3" dia. spot faced.



Enlarged Section A-A  
Scale 3/4" = 1'-0"

Estimated Weight of one tower saddle --- 5700 #  
Total for bridge --- 22,800 #

SUPERSTRUCTURE	
P.W.A. PROJECT NO. ME 1010D	
DEER ISLE SEDGWICK BRIDGE DISTRICT	
BRIDGE OVER EGGEMOGGIN REACH	
FROM LITTLE DEER ISLE TO SEDGWICK	
HANCOCK COUNTY, MAINE	
MAIN TOWER SADDLES	
ROBINSON AND STEINMAN	SCALE AS NOTED
ENGINEERS	DRAWING NUMBER
NEW YORK CITY	RS 3310-5107
	DATE: DEC 4, 1937

7-26-39 Revised as built

